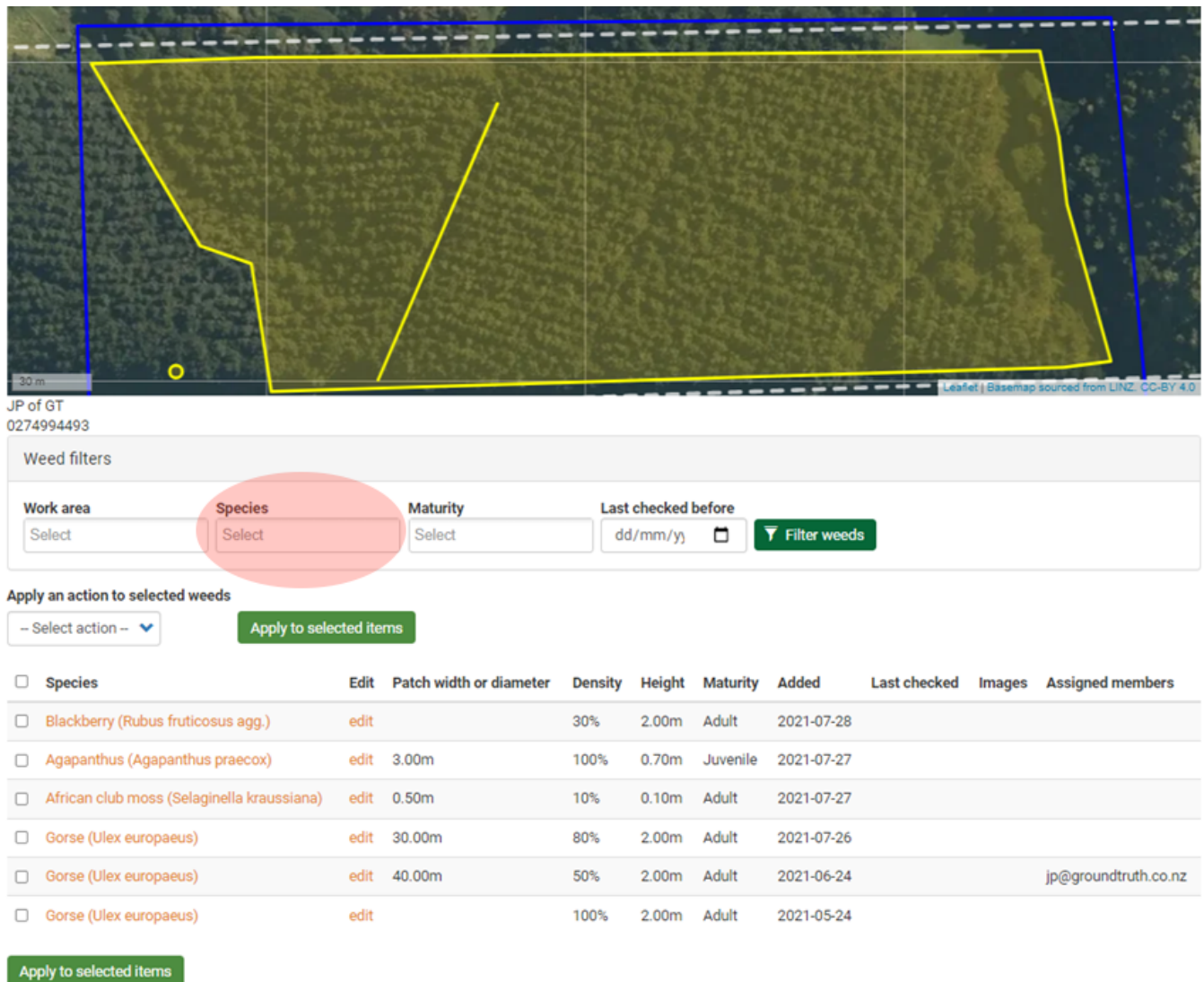


Selecting a weed for action

Under the **Weed** tab you will see your map with a list of weeds in your project area with a filter tool.



The screenshot shows a web interface for weed management. At the top is a map with a yellow polygon highlighting a specific area. Below the map is a section titled "Weed filters" with four input fields: "Work area" (with a "Select" button), "Species" (with a "Select" button and a red circle around it), "Maturity" (with a "Select" button), and "Last checked before" (with a date format "dd/mm/yy" and a calendar icon). To the right of these fields is a green button labeled "Filter weeds". Below the filters is a section titled "Apply an action to selected weeds" with a dropdown menu set to "- Select action -" and a green button labeled "Apply to selected items". Below this is a table of weeds.

<input type="checkbox"/> Species	Edit	Patch width or diameter	Density	Height	Maturity	Added	Last checked	Images	Assigned members
<input type="checkbox"/> Blackberry (<i>Rubus fruticosus</i> agg.)	edit		30%	2.00m	Adult	2021-07-28			
<input type="checkbox"/> Agapanthus (<i>Agapanthus praecox</i>)	edit	3.00m	100%	0.70m	Juvenile	2021-07-27			
<input type="checkbox"/> African club moss (<i>Selaginella kraussiana</i>)	edit	0.50m	10%	0.10m	Adult	2021-07-27			
<input type="checkbox"/> Gorse (<i>Ulex europaeus</i>)	edit	30.00m	80%	2.00m	Adult	2021-07-26			
<input type="checkbox"/> Gorse (<i>Ulex europaeus</i>)	edit	40.00m	50%	2.00m	Adult	2021-06-24			jp@groundtruth.co.nz
<input type="checkbox"/> Gorse (<i>Ulex europaeus</i>)	edit		100%	2.00m	Adult	2021-05-24			

At the bottom left of the table area is a green button labeled "Apply to selected items".

Filter by weed species

You can filter the list of weeds by species to assign or record a management action. Click in the **Species** box and begin typing to only display selected weed species.

Once your weed species has appeared, click on **Filter weeds**. The list below will show only the

chosen species.



Weed filters

Work area

Select

Species

Blackberry (Rubus fruticosus agg.)

Maturity

Select

Last checked before

dd/mm/yy

Filter weeds

Reset

Apply an action to selected weeds

-- Select action --


Selected 0 items in this view

☐lect / deselect all results in this view (all pages, 6 total)

Apply to selected items

<input type="checkbox"/>	Species	Edit	Patch width or diameter	Density	Height	Maturity	Added	Last checked	Images	Assigned members
<input type="checkbox"/>	Blackberry (Rubus fruticosus agg.)	edit		30%	2.00m	Adult	2021-07-28			

Apply to selected items



Apply a management action to a weed

Once you have selected the weed(s) you can choose a management action:

- **Delete weeds:** delete a weed
- **Add Control:** allocate or record a control
- **Assign members:** assign a member to that weed
- **Add Check:** records a monitoring check to track the effectiveness of control

Apply an action to selected weeds

-- Select action --

-- Select action --
Delete weeds
Add Control
Assign members
Add Check

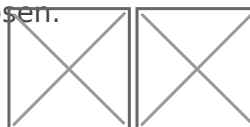
Apply to selected items

<input checked="" type="checkbox"/>	Species	Edit
<input checked="" type="checkbox"/>	Blackberry (Rubus fruticosus agg.)	edit

Controlling weeds

1. Select **Add Control** from the drop down menu and click  **Apply to select items.**

2. Check the **Date**, choose the **State** of the action (either **Pending** or **Completed**), add **Assigned members**.
3. Select the **Control type** from the menu (**Chemical**, **Mechanical**, or **Other**) and provide the additional details required for the method chosen.



4. Notes can be added to describe additional details.

Control type

Chemical

Chemical control method

Hose and gun

Herbicide mix

Blackberry TBXT

For a **Completed** chemical control action, this becomes a record of application or spray diary entry. Factors critical to that aside from who, where and what is how much and what were the conditions. This information can be also be added as shown on the right. The **Chemical Volume Applied** is the total amount of spray mix used for the action.

Configure "Add Control" action applied to the selection

Selected 1 entities:

- Blackberry

Date*

28/07/20;



State*

Completed



Assigned members

jp@groundtruth.co.nz x

Applicators

JP's men

Control type

- None -



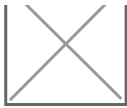
- None -

Chemical

Mechanical

Other

Once you have entered the information click on **Apply**



to save the record. You can see the record by clicking on the weed under the weeds tab.

To go back to that tab click on **My Projects** then click on your project and click on the weed.

Apply an action to selected weeds

-- Select action --

Apply to selected items

<input type="checkbox"/> Species	Edit	Patch width or diameter	Density	Height	Maturity	Added	Last checked	Images	Assigned members
<input type="checkbox"/> Blackberry (<i>Rubus fruticosus</i> agg.)	edit		30%	2.00m	Adult	2021-07-28			



The screenshot below shows the record as **Pending** action. This can be updated to **Completed** by clicking on the date for the record.

A Pending Control is one that has been scheduled but not yet carried out. Set to Completed to add extra data such as environmental conditions and chemical volume applied.

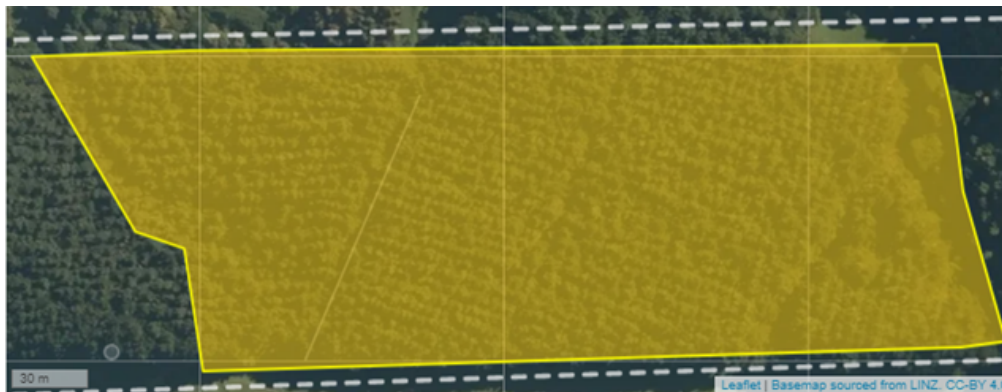
State*

Pending

Pending

Completed

jp@groundtruth.co.nz x



Checks

Add check

Controls

Date	State	Assigned members	Applicators	PPE used for application	Control type	Herbicide mix	Chemical volume applied	
2021-07-28	Pending	jp@groundtruth.co.nz	JP's men	Cotton overalls	Chemical	Hose and gun	Blackberry TBXT	250.00L

Add control

Revision #4

Created 5 August 2021 05:01:52

Updated 25 August 2021 00:12:31 by Daniel Bar-Even